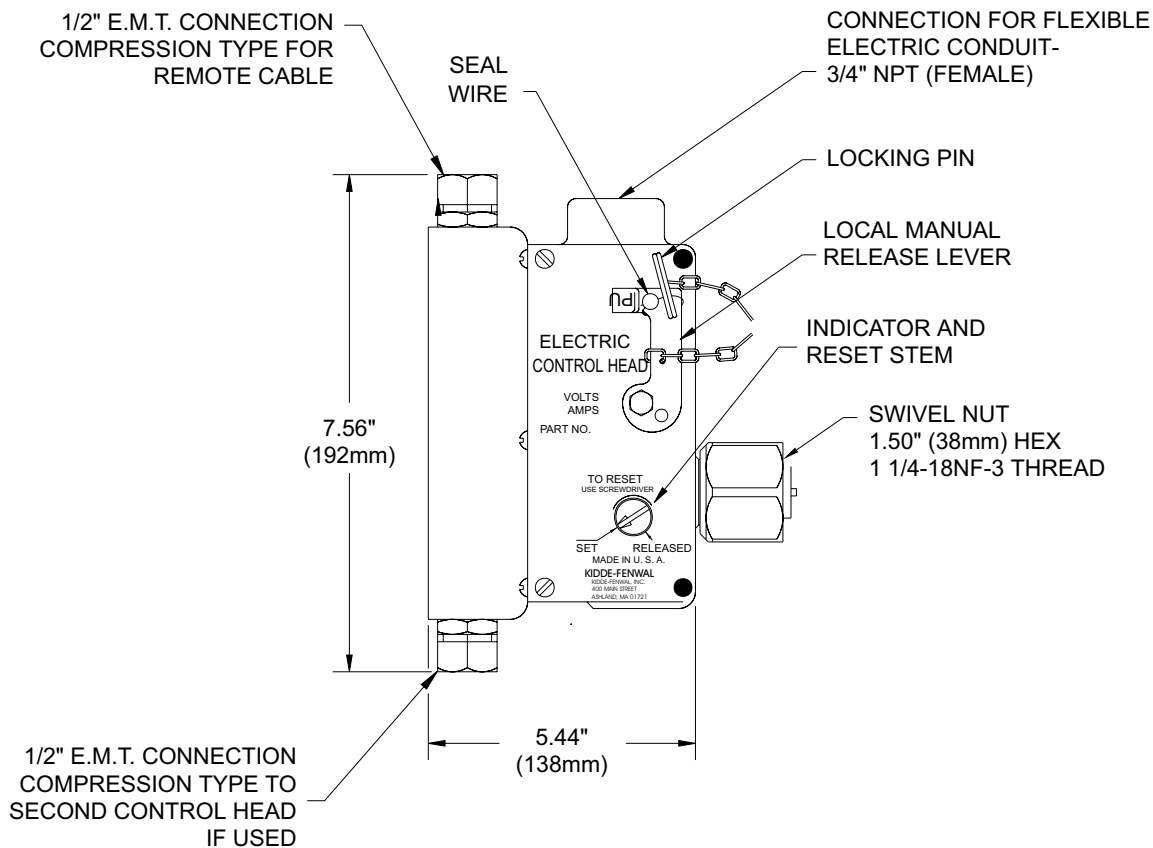


FE-13 Component Description

Effective: August 1999

Electric and Cable Operated Control Head

K-96-6020



PART NO.	CONTROL HEAD	
	VOLTAGE	AMPS
895630	24 VDC	2.0 MOMENTARY
895628	125 VDC	0.3 MOMENTARY
895627	115 VAC	1.0 MOMENTARY

This literature is provided for informational purposes only. KIDDE-FENWAL, INC. assumes no responsibility for the product's suitability for a particular application. The product must be properly applied to perform as described herein.

If you need more information on this product, or if you have a question, contact KIDDE-FENWAL, INC., Ashland, MA 01721. (508) 881-2000.

K-96-6020 8/99 ©1999 Kidde-Fenwal, Inc. Printed in U.S.A.

KIDDE[®]
Fire Systems

KIDDE-FENWAL, INC.
400 MAIN STREET, ASHLAND, MA 01721
TEL: (508) 881-2000 FAX: (508) 881-8920