

# FM-200 Component Description

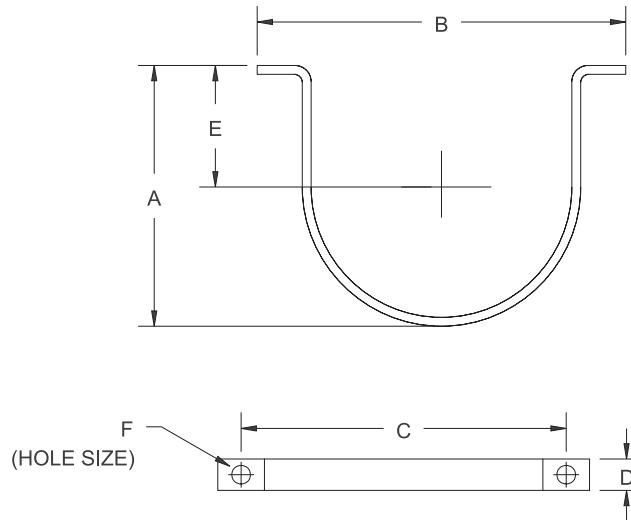
Effective: April 1999

## Cylinder Mounting Straps

K-90-8130M

### Features

- See KIDDE Manual 90-FM200M-021 for USCG approval



PART NO.	CYL SIZE	CYL O.D.*	A*	B*	C*	D*	E*	F*
283945	10,20	7.07	6.48	9.62	8.62	1.00	2.78	.437
283934	40,70	9.00	8.16	11.69	10.69	1.00	3.50	.437
235317	125,200	12.75	12.93	16.18	14.56	1.75	5.59	.625
281866	350	16.00	15.50	19.50	17.88	1.75	7.25	.625
294651	600	22.00	21.56	25.75	24.12	1.75	10.25	.625

\* DIMENSIONS ARE IN INCHES

**MATERIAL: STEEL, PAINTED BLACK  
SAE 1020**

This literature is provided for informational purposes only. KIDDE-FENWAL, INC. assumes no responsibility for the product's suitability for a particular application. The product must be properly applied to perform as described herein.

If you need more information on this product, or if you have a question, contact KIDDE-FENWAL, INC., Ashland, MA 01721. (508) 881-2000.

K-90-8130M 4/99 ©1999 Kidde-Fenwal, Inc. Printed in U.S.A.

**KIDDE**<sup>®</sup>  
**Fire Systems**

KIDDE-FENWAL, INC.  
400 MAIN STREET, ASHLAND, MA 01721  
TEL: (508) 881-2000 FAX: (508) 881-8920