

FM-200 Component Description

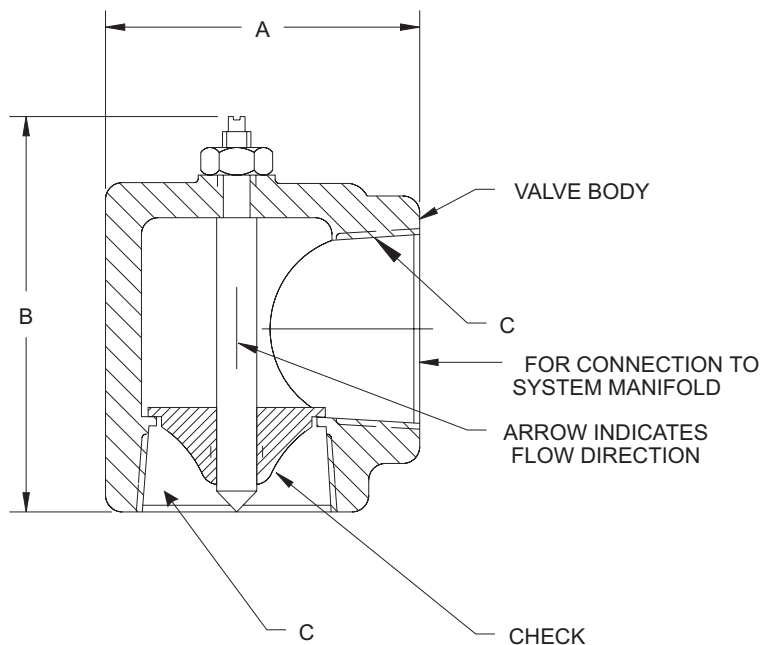
Effective: April 1999

K-90-2130

Manifold El-Check

Features

- For use with UL listed, ULC listed & FMRC approved systems
- See KIDDE Manual 90-FM200M-021 for USCG approval



PART NO.	SIZE	A*	B*	C*
877690	2	3.93	4.88	2 - 11-1/2 NPT
878743	2-1/2	4.69	5.76	2-1/2 - 8 NPT

*DIMENSIONS ARE IN INCHES

MATERIALS

VALVE BODY: ZINC PLATED STEEL

CHECK: STAINLESS STEEL

SEAT: NITRILE RUBBER

NOTE: EL-CHECKS ARE TO BE INSTALLED AT SYSTEM MANIFOLD IN VERTICAL DIRECTION AS SHOWN

NOTE: DO NOT USE AS A MAIN/RESERVE CHECK VALVE WITH MORE THAN 1 MAIN/RESERVE CYLINDER

This literature is provided for informational purposes only. KIDDE-FENWAL, INC. assumes no responsibility for the product's suitability for a particular application. The product must be properly applied to perform as described herein.

If you need more information on this product, or if you have a question, contact KIDDE-FENWAL, INC., Ashland, MA 01721. (508) 881-2000.

K-90-2130 4/99 ©1999 Kidde-Fenwal, Inc. Printed in U.S.A.

KIDDE®
Fire Systems

KIDDE-FENWAL, INC.
400 MAIN STREET, ASHLAND, MA 01721
TEL: (508) 881-2000 FAX: (508) 881-8920