

# FM-200 Component Description

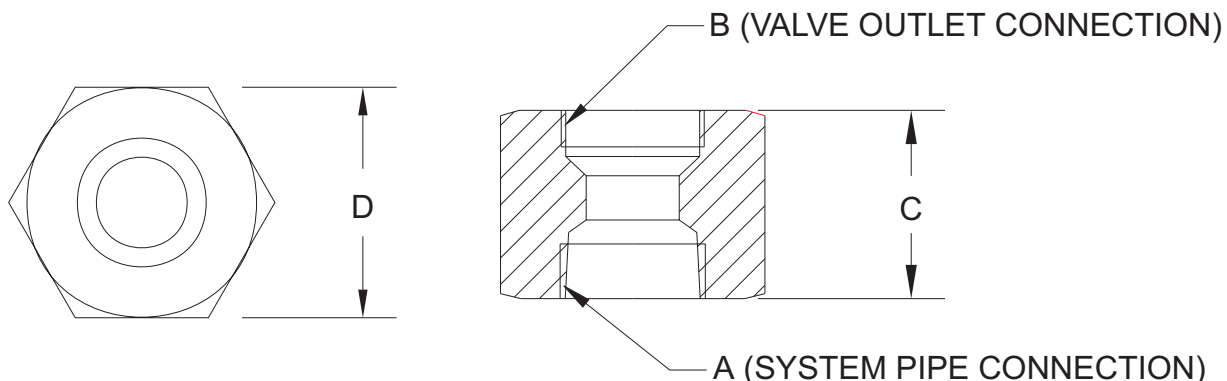
Effective: April 1999

K-90-2100

## Valve Outlet Adapters

### Features

- For use with UL listed, UIC listed & FMRC approved systems
- See KIDDE Manual 90-FM200M-021 for USCG approval



### ORDERING INFORMATION

PART NO.	SIZE	A*	B*	C*	D*
283904	1-1/2	1-1/2 11-1/2 NPT	1.874 12 UNJ	2.69	2.50 HEX
283905	2	2 11-1/2 NPT	2.500 12 UNJ	3.12	3.00 HEX
283906	2-1/2	2-1/2 8 NPT	3.00 12 UNJ	3.00	3.75 HEX

\* DIMENSIONS ARE IN INCHES

**MATERIAL: BRASS**

**NOTE: FOR DIRECT CONNECTION OF CYLINDER VALVE TO DISTRIBUTION PIPING.**

P/N: 28390X

This literature is provided for informational purposes only. KIDDE-FENWAL, INC. assumes no responsibility for the product's suitability for a particular application. The product must be properly applied to perform as described herein.

If you need more information on this product, or if you have a question, contact KIDDE-FENWAL, INC., Ashland, MA 01721. (508) 881-2000.

K-90-2100 4/99 ©1999 Kidde-Fenwal, Inc. Printed in U.S.A.

**KIDDE**<sup>®</sup>  
**Fire Systems**

KIDDE-FENWAL, INC.  
400 MAIN STREET, ASHLAND, MA 01721  
TEL: (508) 881-2000 FAX: (508) 881-8920