

FM-200 Component Description

Effective: April 1999

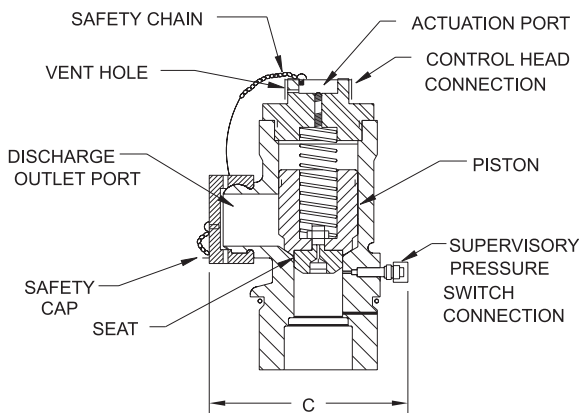
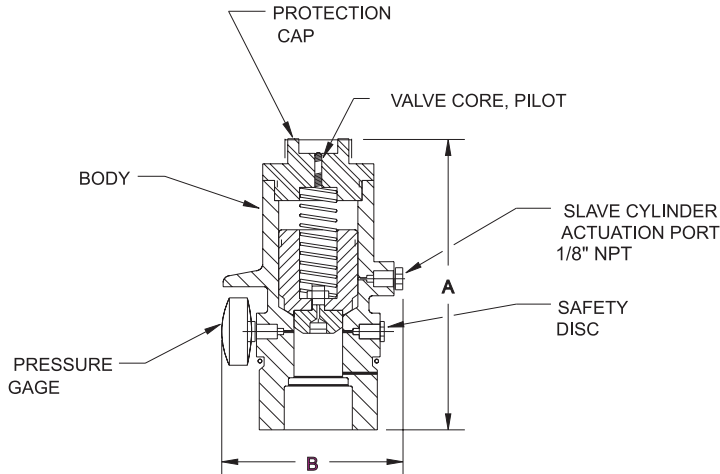
Cylinder Valve

K-90-2080

Features

• For use with UL listed, ULC listed & FMRC approved systems

• See KIDDE Manual 90-FM200M-021 for USCG approval



EQUIVALENT LENGTH IN SCHEDULE. 40 PIPE:

| | |
|--------|-------------------|
| 1-1/2" | : 16.7' OF 1-1/4" |
| 2" | : 28.0' OF 2" |
| 2-1/2" | : 3.5' OF 2-1/2" |

WORKING PRESSURE: 360-609 PSIG
PROOF PRESSURE: 1000 PSIG
BURST PRESSURE 2000 PSIG
TEMPERATURE RANGE: 1 TO 130 F

| PART NO. | VALVE SIZE | A | B | C | D | E | F |
|---------------|------------|--------|-------|-------|-------------|--------|--------|
| 90-140000-000 | 1-1/2" | 7.63" | 4.83" | 5.22" | 754-900 PSI | 242461 | 9.9 LB |
| 90-150000-000 | 2" | 8.80" | 5.32" | 6.28" | 798-972 PSI | 264925 | 15 LB |
| 90-160000-000 | 2-1/2" | 10.04" | 6.30" | 6.61" | 798-972 PSI | 264929 | 24 LB |

D: SAFETY DISC RELIEF PRESSURE
 E: SAFETY DISC REPL. P/N
 F: WEIGHT

MATERIALS

VALVE BODY: BRASS
PISTON: BRASS
FINISH: NATURAL
SEAT: RUBBER

P/N: 90-1X0000-000

This literature is provided for informational purposes only. KIDDE-FENWAL, INC. assumes no responsibility for the product's suitability for a particular application. The product must be properly applied to perform as described herein.

If you need more information on this product, or if you have a question, contact KIDDE-FENWAL, INC., Ashland, MA 01721. (508) 881-2000.

K-90-2080 4/99 ©1999 Kidde-Fenwal, Inc. Printed in U.S.A.

KIDDE®
Fire Systems

KIDDE-FENWAL, INC.
 400 MAIN STREET, ASHLAND, MA 01721
 TEL: (508) 881-2000 FAX: (508) 881-8920