

FM-200 Operational Detail

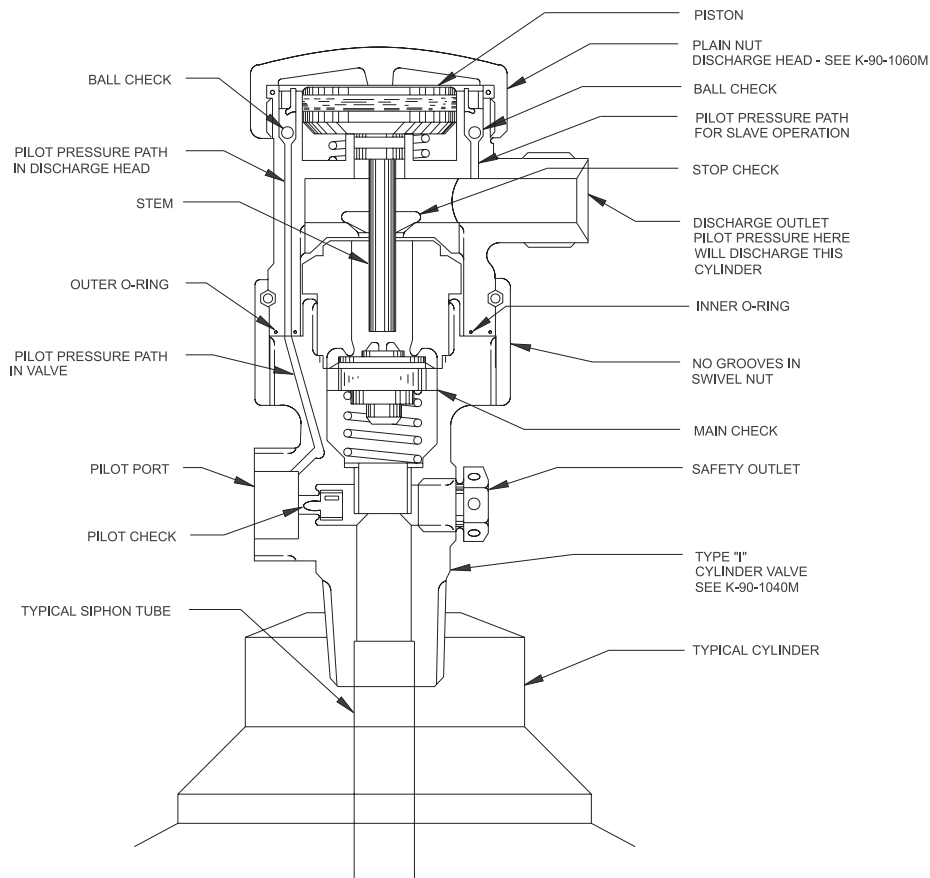
Effective: April 1999

K-90-1061M

Assembly of Plain Nut Discharge Head to Type "I" Cylinder Valve

Features

- For use in marine applications only



⚠ WARNING

NEVER CONNECT DISCHARGE HEAD TO CYLINDER VALVE WITHOUT FLEX LOOP ATTACHED TO DISCHARGE OUTLET AND CONNECTED TO SYSTEM PIPING AND THE CYLINDER IS PROPERLY SECURED. ARRANGEMENT AS SHOWN IS FOR ILLUSTRATION PURPOSES ONLY

This literature is provided for informational purposes only. KIDDE-FENWAL, INC. assumes no responsibility for the product's suitability for a particular application. The product must be properly applied to perform as described herein.

If you need more information on this product, or if you have a question, contact KIDDE-FENWAL, INC., Ashland, MA 01721. (508) 881-2000.

K-90-1061M 4/99 ©1999 Kidde-Fenwal, Inc. Printed in U.S.A.

KIDDE[®]
Fire Systems

KIDDE-FENWAL, INC.
400 MAIN STREET, ASHLAND, MA 01721
TEL: (508) 881-2000 FAX: (508) 881-8920

KIDDE[®] Fire Systems