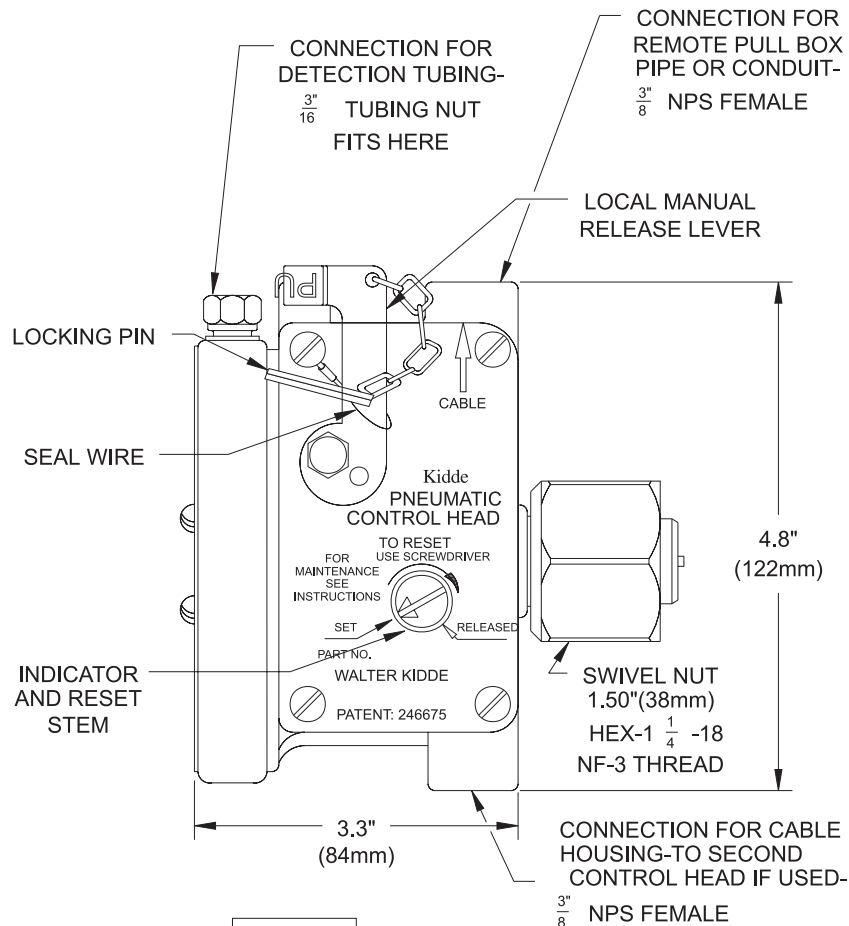


CO₂ Component Description

Effective: April 1999

K-81-7010

Pneumatic Control Head



PART NUMBER	CONTROL HEAD
872318	1 IN.-40 SEC.
872335	3 IN.-5 SEC.
872365	6 IN.-5 SEC.
872362	6 IN.-2 SEC.
872310	1 IN.-TANDEM
872330	3 IN.-TANDEM
872360	6 IN.-TANDEM

This literature is provided for informational purposes only. KIDDE-FENWAL, INC. assumes no responsibility for the product's suitability for a particular application. The product must be properly applied to perform as described herein.

If you need more information on this product, or if you have a question, contact KIDDE-FENWAL, INC., Ashland, MA 01721. (508) 881-2000.

K-81-7010 4/99 ©1999 Kidde-Fenwal, Inc. Printed in U.S.A.

KIDDE[®]
Fire Systems

KIDDE-FENWAL, INC.
400 MAIN STREET, ASHLAND, MA 01721
TEL: (508) 881-2000 FAX: (508) 881-8920

KIDDE[®] Fire Systems