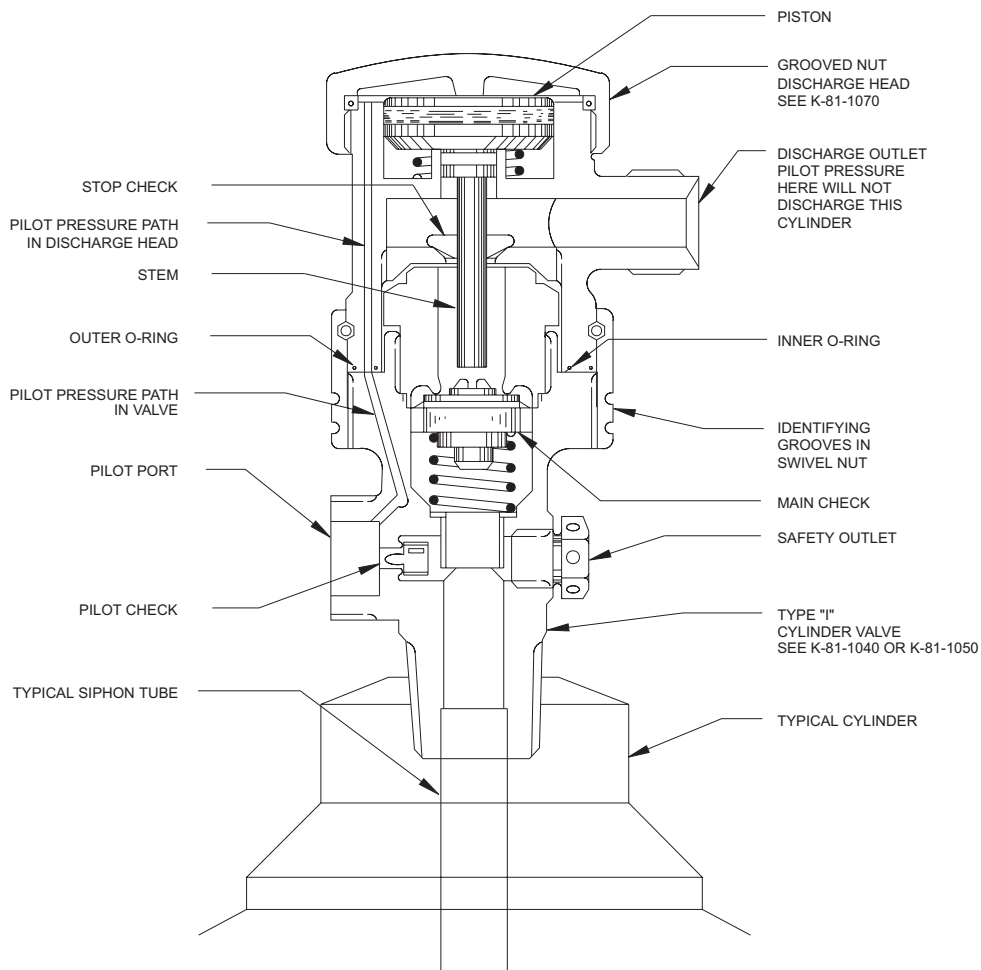


CO₂ Operational Detail

Effective: April 1999

K-81-1071

Assembly of Grooved Nut Discharge Head to Type "I" Cylinder



⚠ WARNING

NEVER CONNECT DISCHARGE HEAD TO CYLINDER VALVE WITHOUT FLEX LOOP ATTACHED TO DISCHARGE OUTLET, CONNECTED TO SYSTEM PIPING AND THE CYLINDER IS PROPERLY SECURED. ARRANGEMENT AS SHOWN IS FOR ILLUSTRATION PURPOSES ONLY.

PRESSURE RATING:
2400 PSIG TO 2800 PSIG (165 BAR-193 BAR)

This literature is provided for informational purposes only. KIDDE-FENWAL, INC. assumes no responsibility for the product's suitability for a particular application. The product must be properly applied to perform as described herein.

If you need more information on this product, or if you have a question, contact KIDDE-FENWAL, INC., Ashland, MA 01721. (508) 881-2000.

K-81-1071 4/99 ©1999 Kidde-Fenwal, Inc. Printed in U.S.A.

KIDDE[®]
Fire Systems

KIDDE-FENWAL, INC.
400 MAIN STREET, ASHLAND, MA 01721
TEL: (508) 881-2000 FAX: (508) 881-8920