

FPS/CO₂ Suppression Systems

Architect and Engineering Specifications

Part No.	Description	Material	Mounting Type
C02-1232	Selector Valve, 1/2" (15 mm)	Brass	1/2" (15 mm) NPT Female
C02-1233	Selector Valve, 3/4" (20 mm)	Brass	3/4" (20 mm) NPT Female
C02-1234	Selector Valve, 1" (25 mm)	Brass	1" (25 mm) NPT Female
C02-1235	Selector Valve, 1 1/2" (40 mm)	Brass	1 1/2" (40 mm) NPT Female
C02-1236	Selector Valve, 2"-3" (50-80 mm)	Ductile Iron	3" (80 mm) Flange - 600 lb. (4137 kpa) Raised Face
C02-1237	Manual Release Lever	Brass	N/A
C02-1239	Selector Valve 4" (100 mm)	Ductile Iron	4" (100 mm) Flange - 600 lb. (4137 kpa) Raised Face

APPLICATION

Selector Valves are used to direct the flow of carbon dioxide into one specific hazard of a multiple hazard system. All selector valves are equipped with an electric solenoid actuator. Electrical actuation of the selector valve is accomplished when the solenoid valve receives a signal from the Fike control panel. Mechanical activation can be accomplished by operating the manual release lever on top of the valve.

DESCRIPTION

The Selector Valve is constructed of either brass or ductile iron, depending on the valve size. The valve is a pressure differential type that blocks the flow of agent through the piping until it is activated. Valve actuation is accomplished either manually with the manual release lever, (P/N C02-1237), or by the 24VDC solenoid actuator that is part of the selector valve assembly.

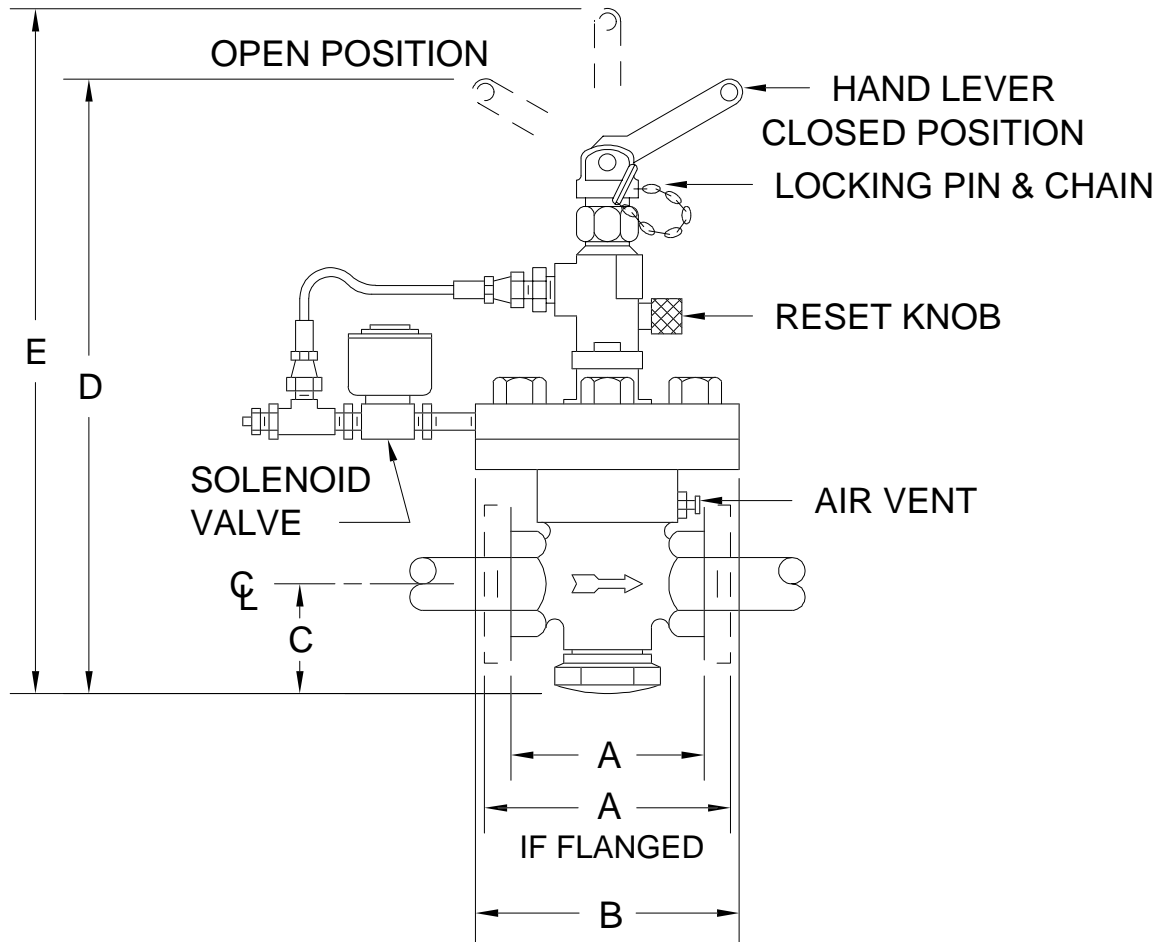
INSTALLATION

The Selector Valve is installed in the supply piping branch for the hazard being protected. Depending on the size of the selector valve, the valve is either threaded in place, or bolted to the piping flanges. The flow arrow on the valve body casting must point in the direction of flow toward the hazard.

Refer to the back of this sheet for installation details and dimensions.

APPROVALS

U.L. Ex2968



NOTE: A Manual Release Lever, (C02-1237), **must** be ordered in addition to the selector valve

VALVE SIZE	BODY	DIM. "A"	DIM. "B"	DIM. "C"	DIM. "D"	DIM. "E"
1/2" (15 mm)	Threaded	4 3/4" (12.1 cm)	6 15/16" (17.62 cm)	2 3/4" (7.0 cm)	15" (38.1 cm)	16 9/16" (42.1 cm)
3/4" (20 mm)	Threaded	4 3/4" (12.1 cm)	6 15/16" (17.62 cm)	2 3/4" (7.0 cm)	15" (38.1 cm)	16 9/16" (42.1 cm)
1" (30 mm)	Threaded	4 3/4" (12.1 cm)	6 15/16" (17.62 cm)	2 3/4" (7.0 cm)	15" (38.1 cm)	16 9/16" (42.1 cm)
1 1/2" (40 mm)	Threaded	5 3/4" (14.6 cm)	6 15/16" (17.62 cm)	3 1/8" (7.9 cm)	15 7/8" (40.3 cm)	17 7/16" (44.3 cm)
2", 2 1/2", 3" (50, 65, 80 mm)	Flanged	13" (33.0 cm)	5 3/4" (14.6 cm)	6 1/8" (15.6 cm)	19 5/8" (45.9 cm)	21 1/4" (54.0 cm)
4" (100 mm)	Flanged	16" (40.6 cm)	5 3/4" (14.6 cm)	8 1/4" (20.9 cm)	22 5/8" (57.5 cm)	24 1/4" (61.6 cm)